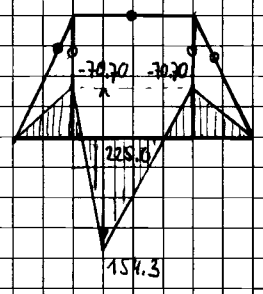


Baustatik I + II

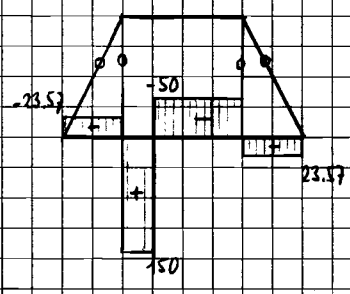
Lösung der Semiprofing

Herbst 06 vorgezogen

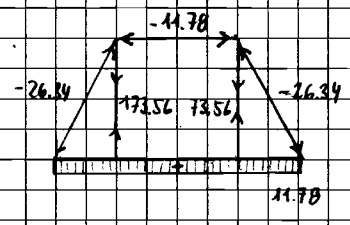
1a) M [kNm]:



V [kN]:

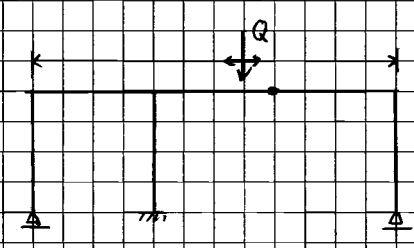
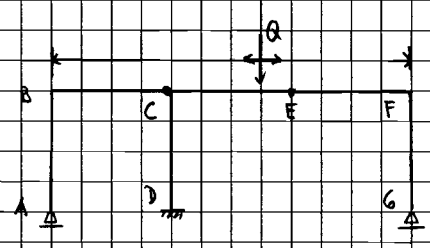


N [kN]:

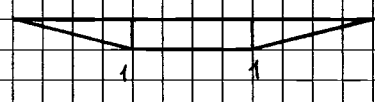


b) $\sigma_{max}(AD) = 173 \text{ N/mm}^2$
 $\sigma_{max}(EB) = 221 \text{ N/mm}^2$

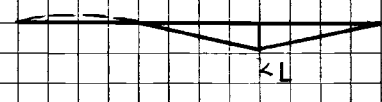
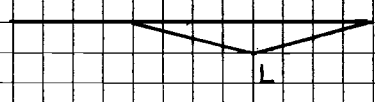
2)



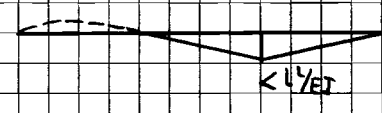
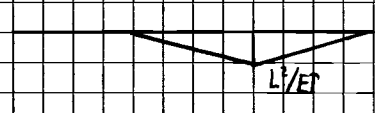
a) η_{01} :



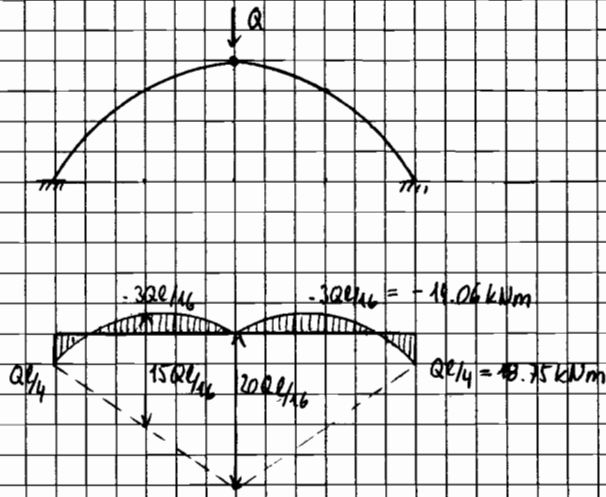
b) η_{10} :



c) η_{12} :



3 a)

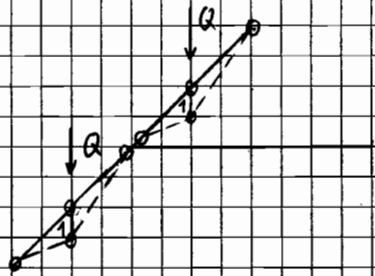


b) $w = \frac{Ql^3}{12 EI_s} = 3.5 \text{ mm}$

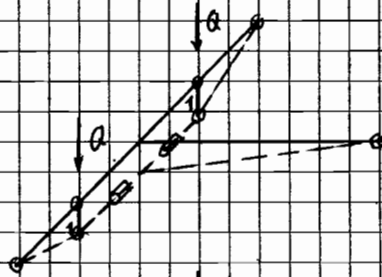
4 a) $e_o = 58 \text{ mm}$

b) $e_o = 22 \text{ mm}$

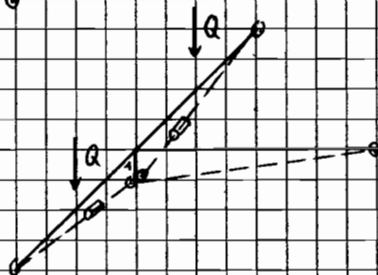
5 a)



$Q_n \leq \frac{4M_u}{e}$

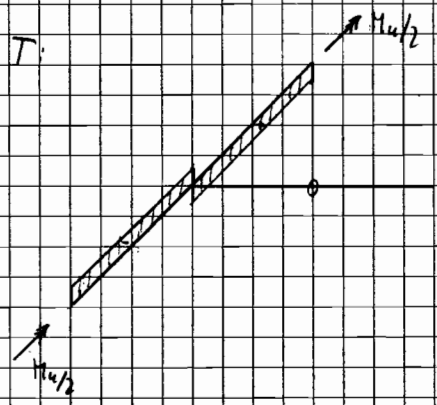
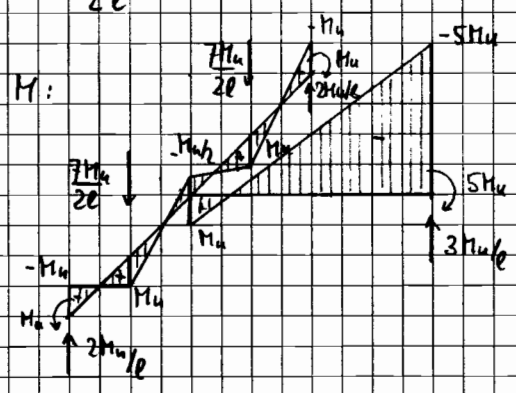


$Q_n \leq \frac{7M_u}{2e}$

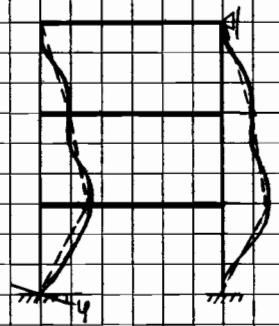


$Q_n \leq \frac{5M_u}{e}$

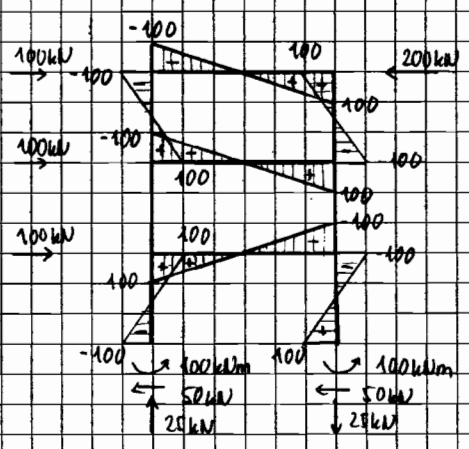
b) $Q_u = \frac{7M_u}{2l}$



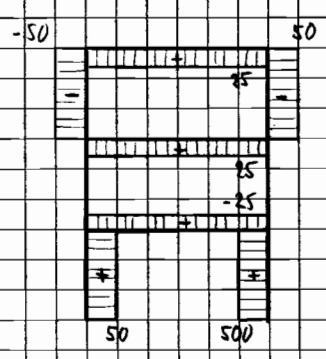
6a)



b) M [kNm]:



V [kN]:



N [kN]:

