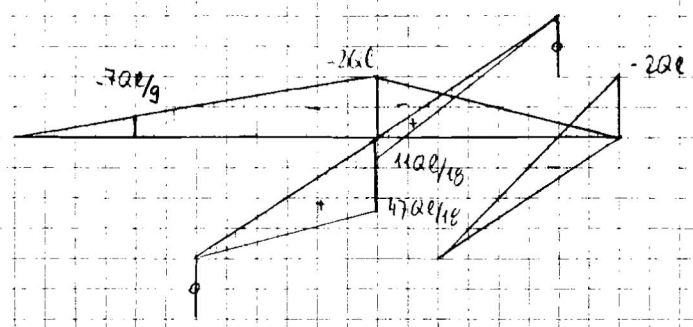


Raumfahrt I + II

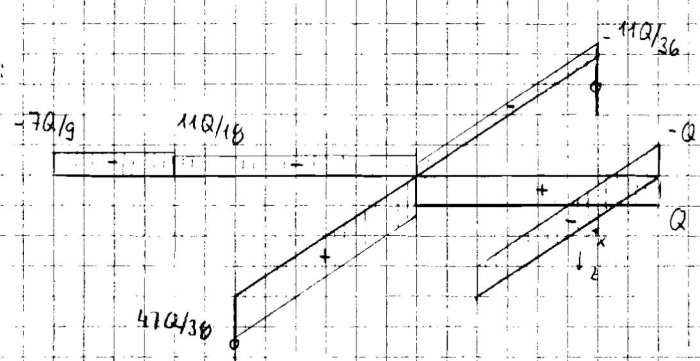
Lösung der Seilspannungsprüfung

Frühjahr 00

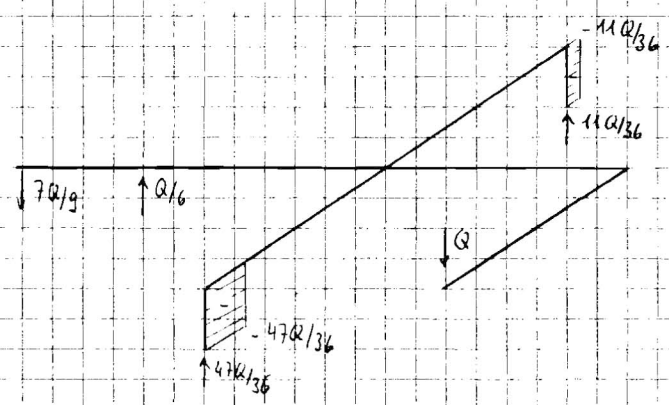
1a) M:



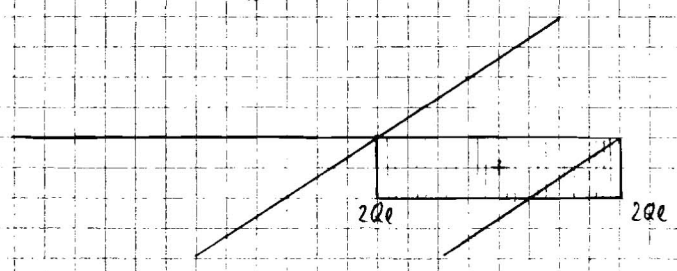
V:



N:

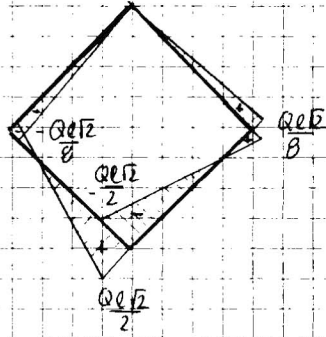


T:

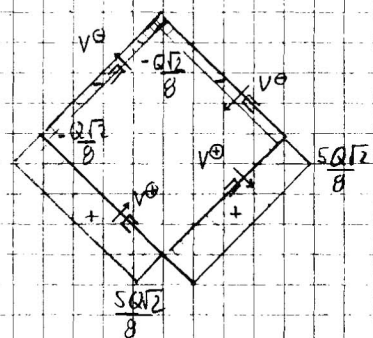


b) $v_I = \frac{319 QL^3}{108 EI}$

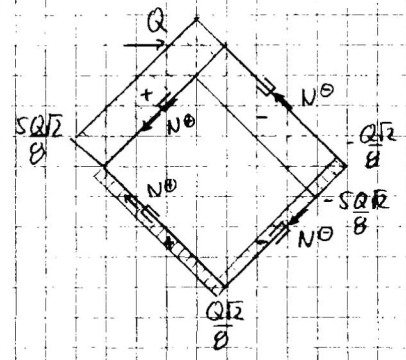
2a) M:



V:

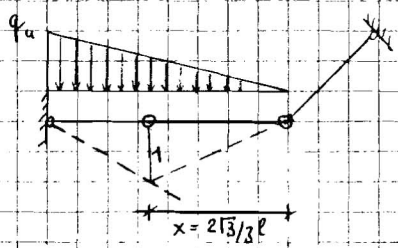


N:



$$b) V_c = \sqrt{V_{cx}^2 + V_{cy}^2} = \sqrt{\left(\frac{7QL^3}{24EI}\right)^2 + 0} = \frac{7QL^3}{24EI}$$

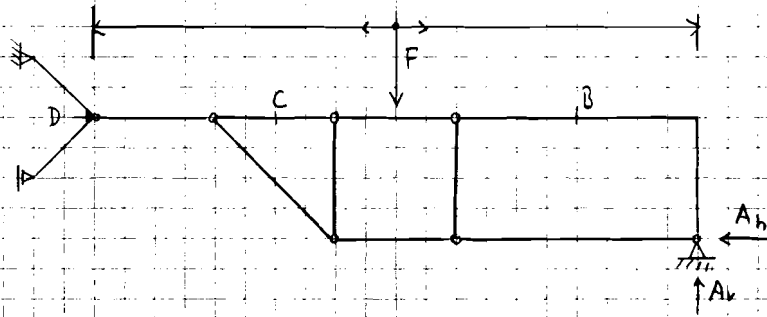
3) $q_u = \frac{27 \cdot \sqrt{3}}{8000} \text{ kN/m}$



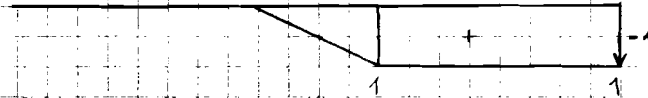
Plachterlastkontrolle:



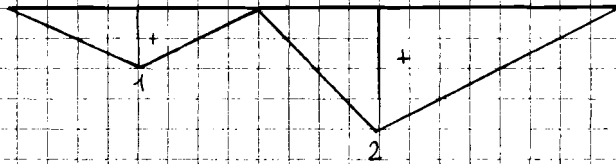
4)



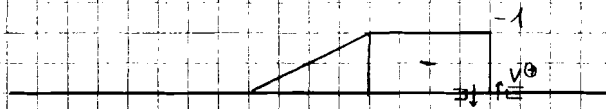
M_{Av}



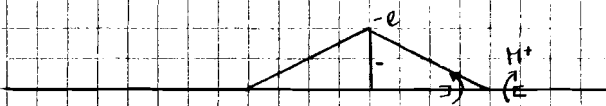
M_{Av}



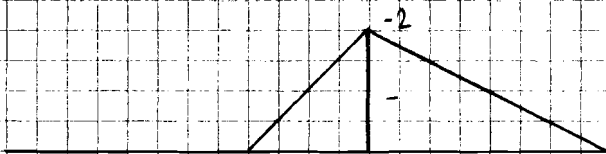
M_{vB}



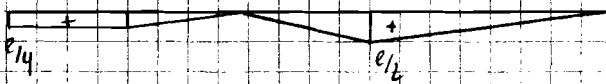
M_{Hb}



M_{Hc}



M_{H0}

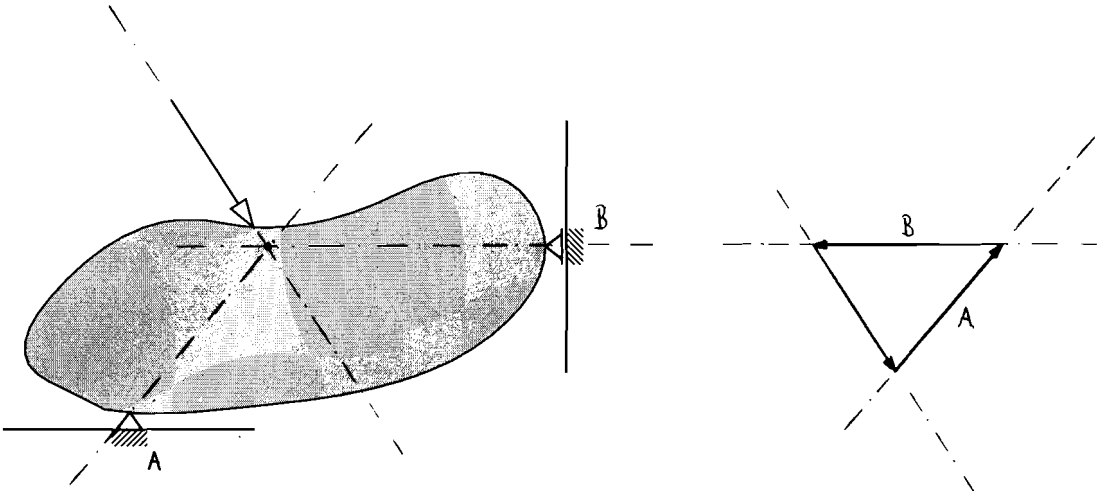


Aufgabe 5

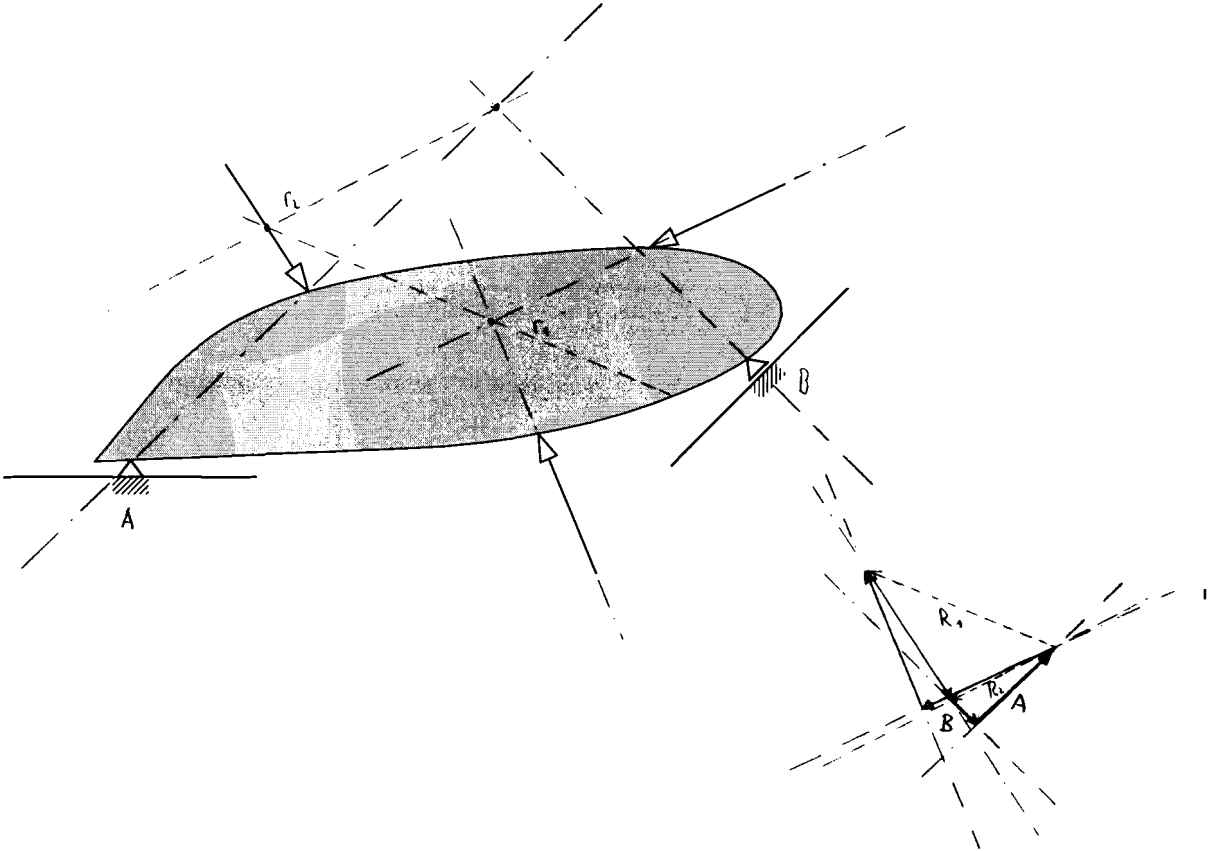
Gegeben: Statische Systeme und Belastungen.

Gesucht: Auflagerreaktionen graphisch. Die Aufgaben sind auf dem Aufgabenblatt zu lösen. 1mm $\hat{=}$ 10 kN

a)



b)



c)

